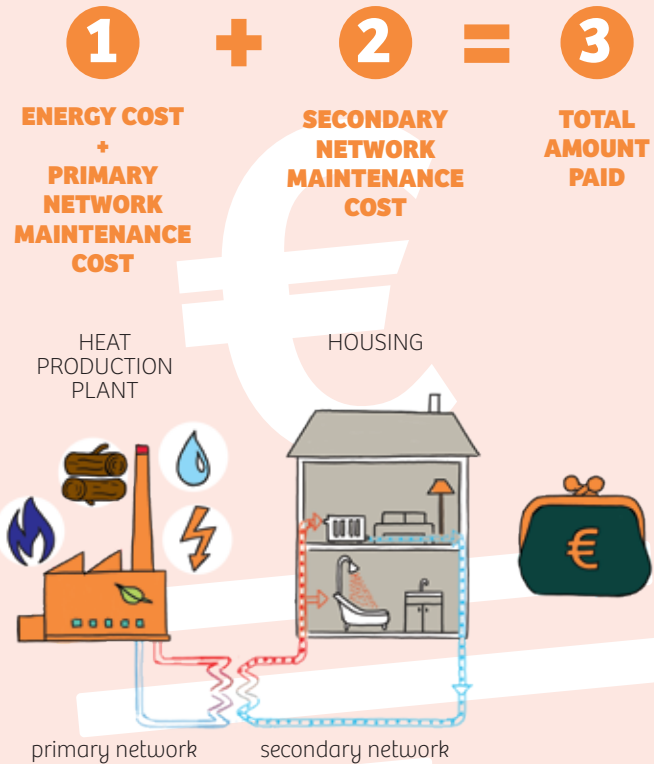


Let's discover our bill!

THE DISTRIBUTION OF DISTRICT HEATING COSTS



GOOD TO KNOW

The secondary network concerns installations inside your building, such as pipes, radiators,...



How to avoid water wastage?

- Take showers (60l) instead of baths (200l)
- Do not let run water while washing dishes.
- Brush your teeth and wash your hands with cold water (10% savings).

Some tips to feel good while saving heat

- Set thermostats, when available, to below 20°C.
- Tell your janitor if your accommodation is overheated.
- Don't cover radiator thermostats (even with a cloth).
- To renew the air, open the windows just 15 to 30 minutes (Remember to close the windows when you leave!)
- In case of leak, alert your building's janitor, the property manager or your heating referent.

smirec
SYNDICAT MIXTE DES RÉSEAUX
D'ÉNERGIE CALORIFIQUE
Chauffer durable et solidaire

ENGLISH
VERSION



www.smirec.fr

syndicat.mixte@smirec.fr - 01 48 38 20 02

la Courneuve

STAINS
VILLE DE

Plaine
Commune

ALEC
Plaine
Commune

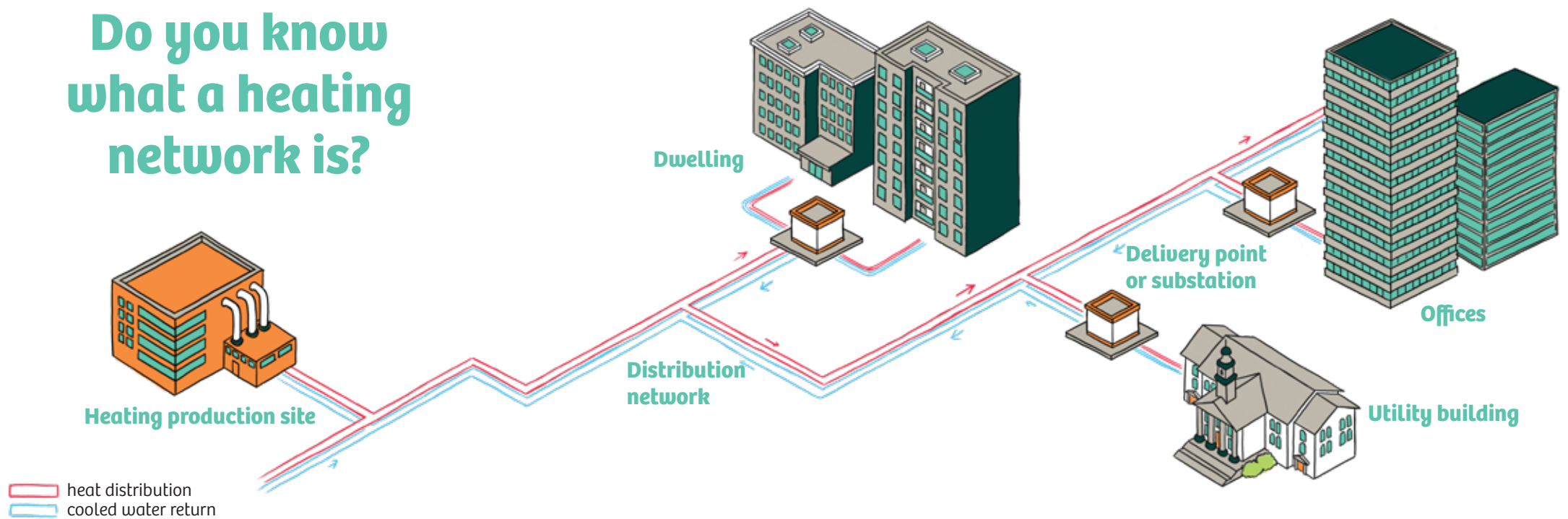
Saint
Denis

rile
saint
denis

AUBERVILLIERS

Plaine
Commune
ÉNERGIE
SYNDICAT MIXTE

Do you know what a heating network is?



Renewable energies that feed your grid

Biomass

Biomass corresponds in particular to the unused wood from sawmills or resulting from forest maintenance. Its combustion produces heat. The advantage of using biomass instead of fossil



fuel is the resulting neutral balance of carbon dioxide emissions, since the emitted gas is actually absorbed during the tree's growth.

Geothermal energy

A geothermal plant uses the naturally warm water located in the deep Earth's subsoil in order to heat the water of the heating network, which is then distributed to you. Once cooled, the water collected from the Earth's subsoil returns to its original point. It is therefore a renewable, local and non-polluting energy.



THE BENEFITS OF DISTRICT HEATING SYSTEM

